

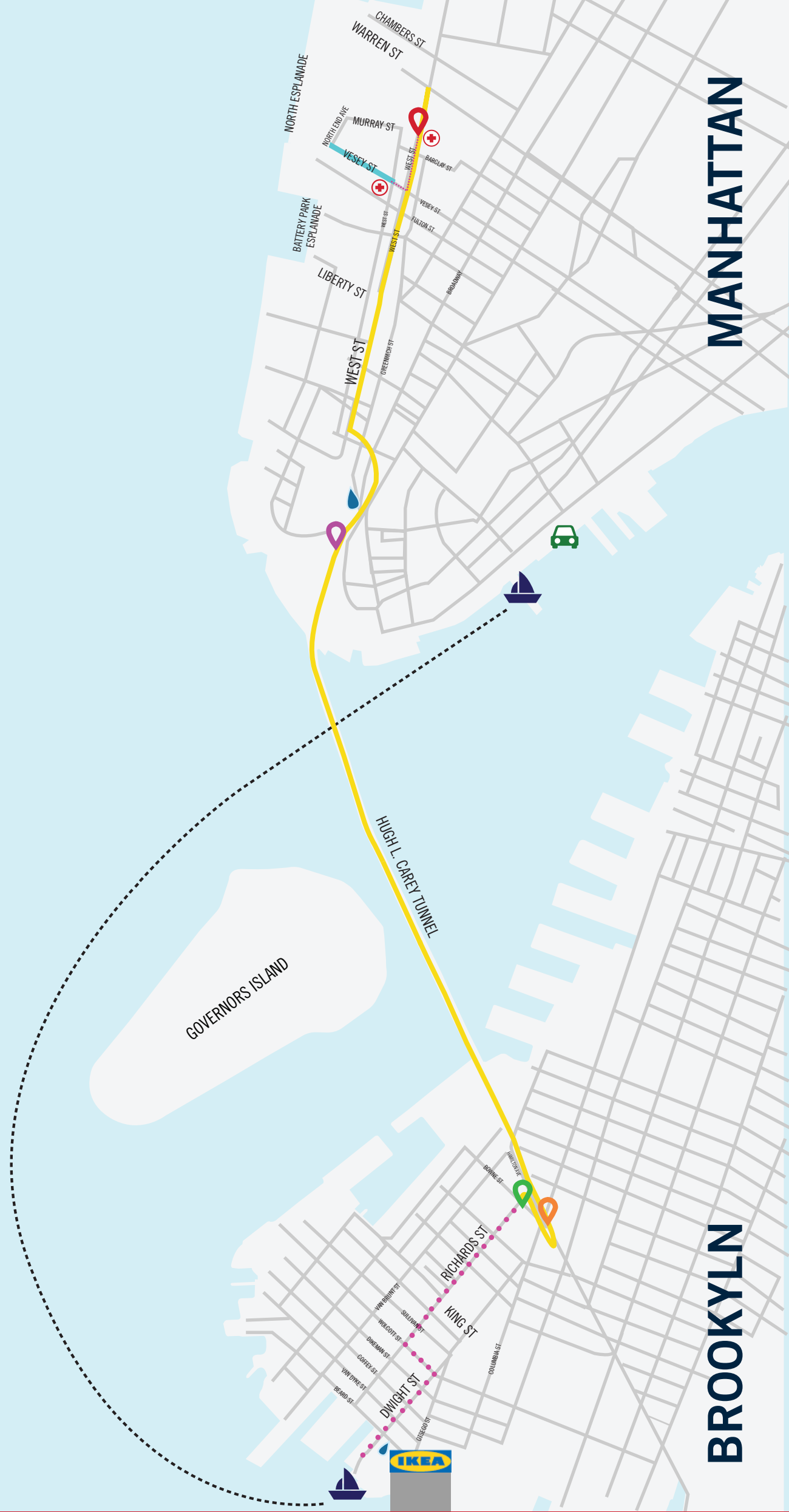


Tunnel to Towers Foundation

T2T.ORG

-  START LINE
-  TUNNEL ENTRANCE
-  TUNNEL EXIT
-  FINISH LINE
-  MEDICAL
-  WATER STATION
-  WATER TAXI
-  PARKING

-  BBQ & CONCERT
-  COURSE ROUTE
-  WATER TAXI ROUTE
-  WALKING



MANHATTAN

BROOKLYN

NO PROHIBITED ITEMS ARE PERMITTED ON THE WATER TAXI, IN PARTICIPANT CORRALS OR ANYWHERE ON THE RUN COURSE.

HELPFUL TIPS

Prohibited items are as follows, but not limited to: strollers, wheelchairs, wagons, roller blades, bicycles, recumbent bikes, bags of any kind (backpacks, purses, fanny packs), water bottles, CamelBaks, hydration backpacks, weapons of any kind or dual use items that could be considered dangerous (firearms, knives, mace, umbrellas), flag poles, Scott air paks, child carriers, weight vests, animals, self sticks, GoPros, drones.

No cars will be allowed to enter the IKEA Parking lot.

No prohibited items including food and beverage is allowed on the Water Taxi.

Water bottles must be disposed of before reaching the start line.

Runners will proceed to the security checkpoint on Richards Street and Wolcott Street for admittance to the participant corrals.

NY Water Taxi from Pier 11 Wall St Terminal to IKEA, Brooklyn is strongly recommended.